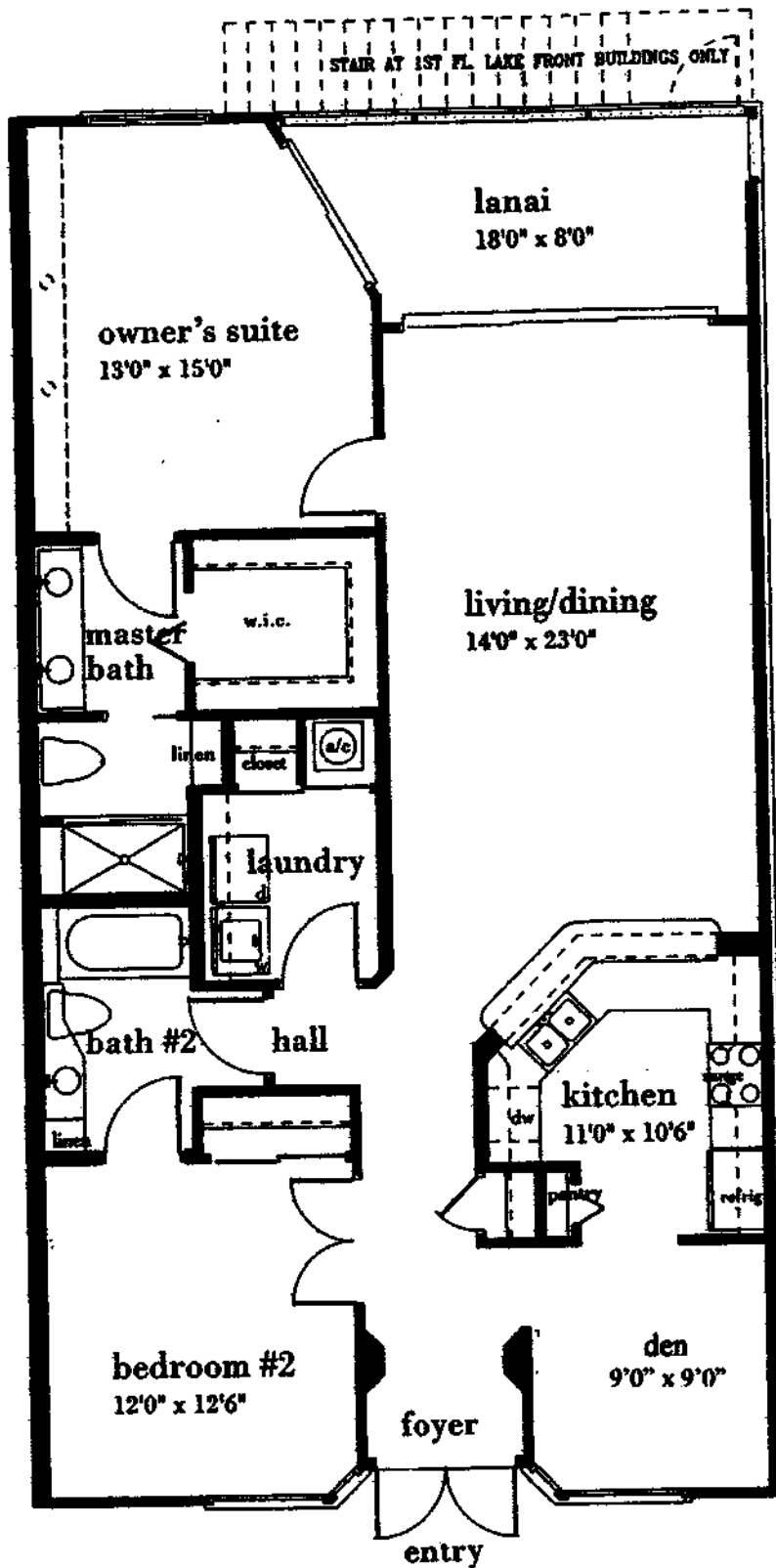


ANTIGUA

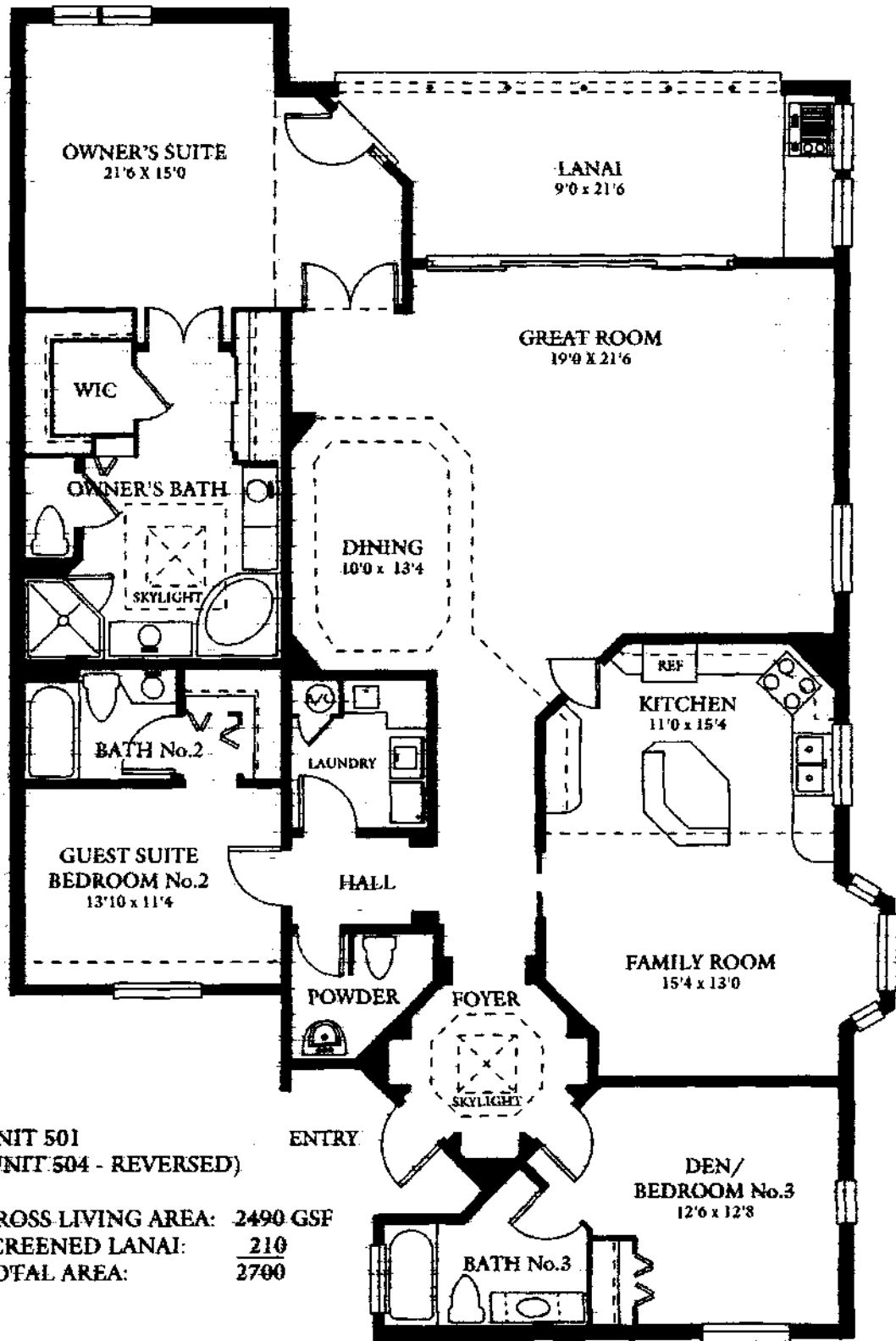


UNITS 103, 203, 303
(102, 202, 302 Reversed)

GROSS LIVING AREA	1327
SCREENED LANAI	126
TOTAL AREA	1453

(VAULTED CEILINGS AT 3RD FLOOR)
Dimensions and area are approximate.

AUGUSTA

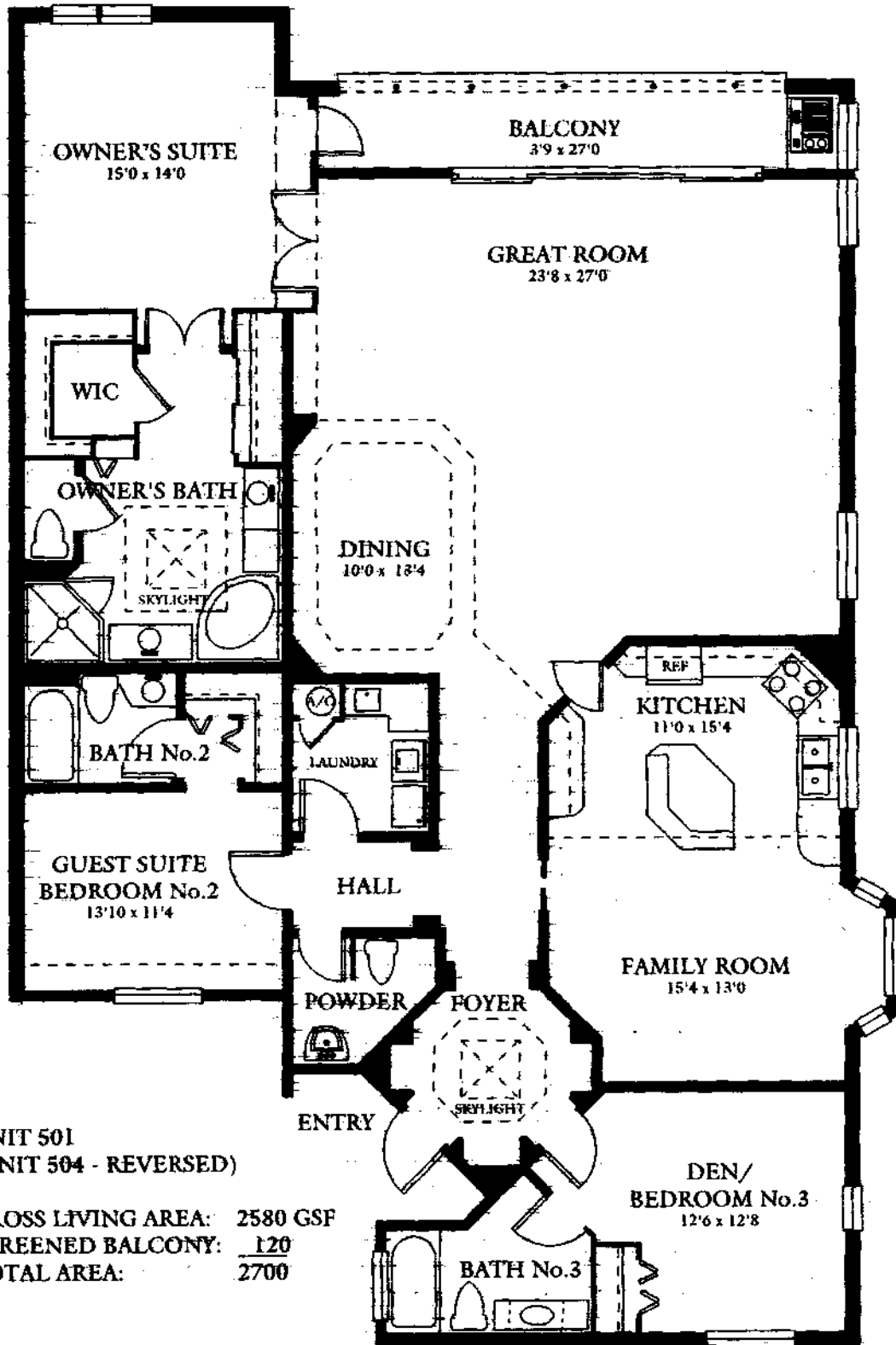


UNIT 501
(UNIT 504 - REVERSED)

GROSS LIVING AREA: 2490 GSF
 SCREENED LANAI: 210
 TOTAL AREA: 2700

All graphic depictions, including dimensions and area, are approximate and subject to change without notice. Oral representations cannot be relied upon as correctly stating representation of the developer. For correct representations, make reference to the documents required by FLORIDA STATUTES SECTION 718.503 to be furnished by the developer to the buyer or lessee.

AUGUSTA - FLORIDA OPTION

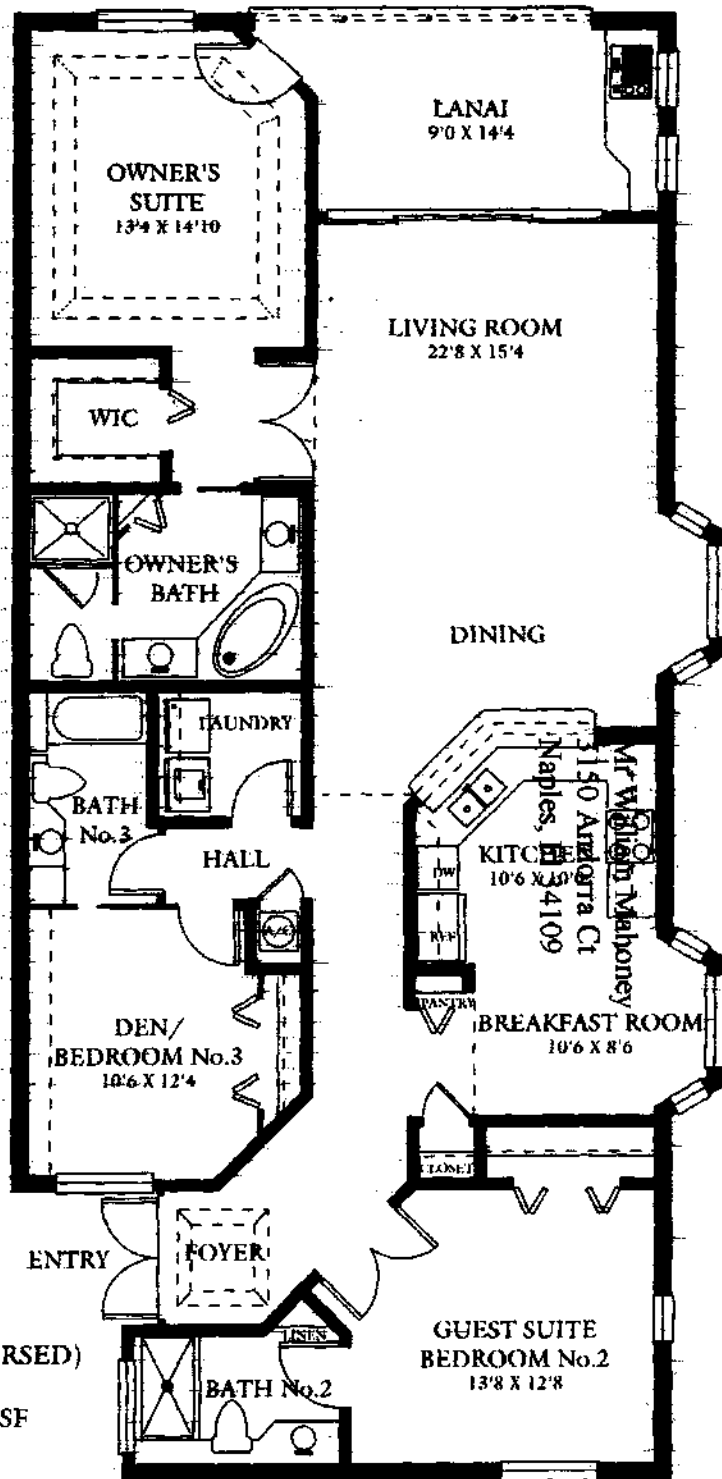


UNIT 501
(UNIT 504 - REVERSED)

GROSS LIVING AREA: 2580 GSF
 SCREENED BALCONY: 120
 TOTAL AREA: 2700

All graphic depictions, including dimensions and area, are approximate and subject to change without notice. Oral representations cannot be relied upon as correctly stating representation of the developer. For correct representations, make reference to the documents required by FLORIDA STATUTES SECTION 718.503 to be furnished by the developer to the buyer or lessee.

DORAL

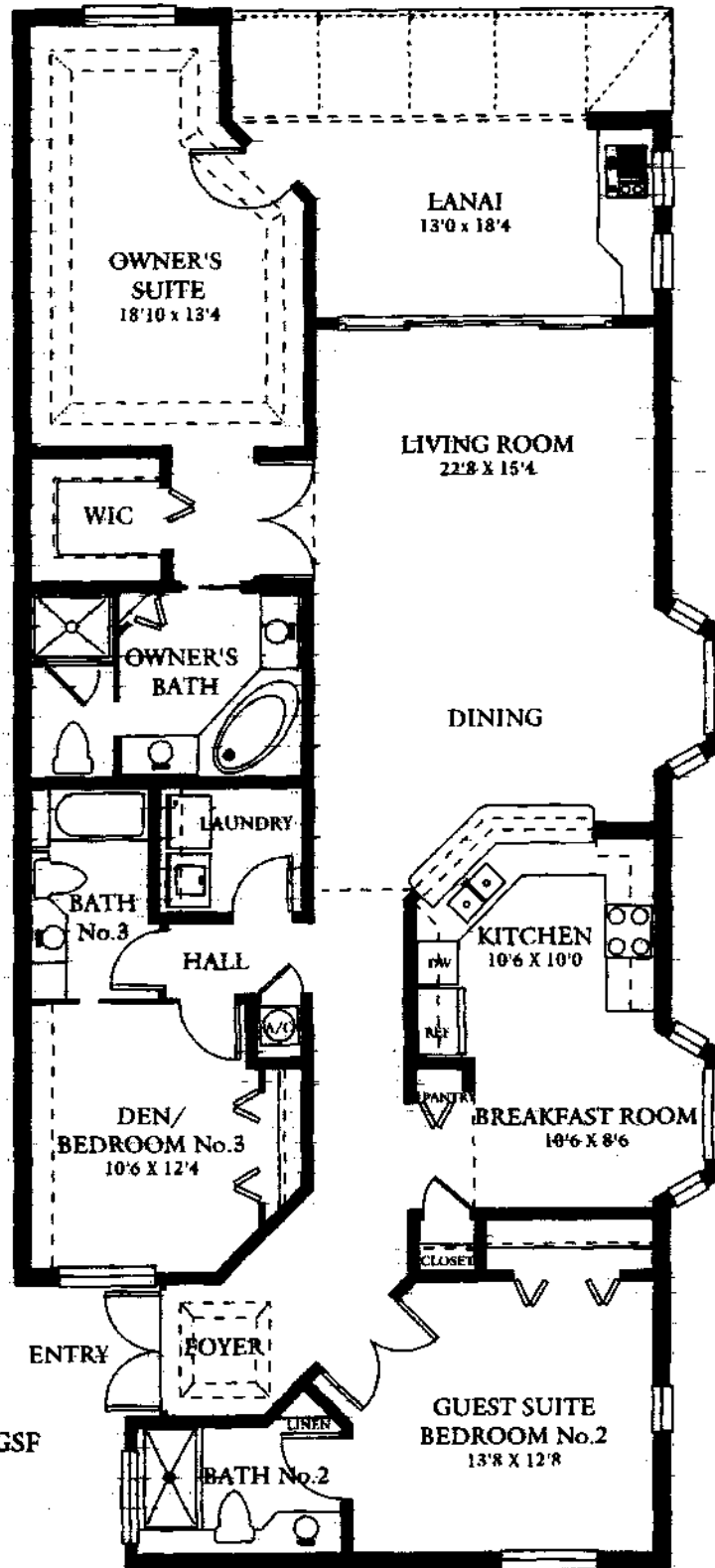


UNITS 206, 306, & 406
 (UNITS 201, 301, & 401 - REVERSED)

GROSS LIVING AREA: 1813 GSF
 SCREENED LANAI: 153
 TOTAL AREA: 1966

All graphic depictions, including dimensions and area, are approximate and subject to change without notice. Oral representations cannot be relied upon as correctly stating representation of the developer. For correct representations, make reference to the documents required by FLORIDA STATUTES SECTION 718.503 to be furnished by the developer to the buyer or lessee.

DORAL - FIRST FLOOR

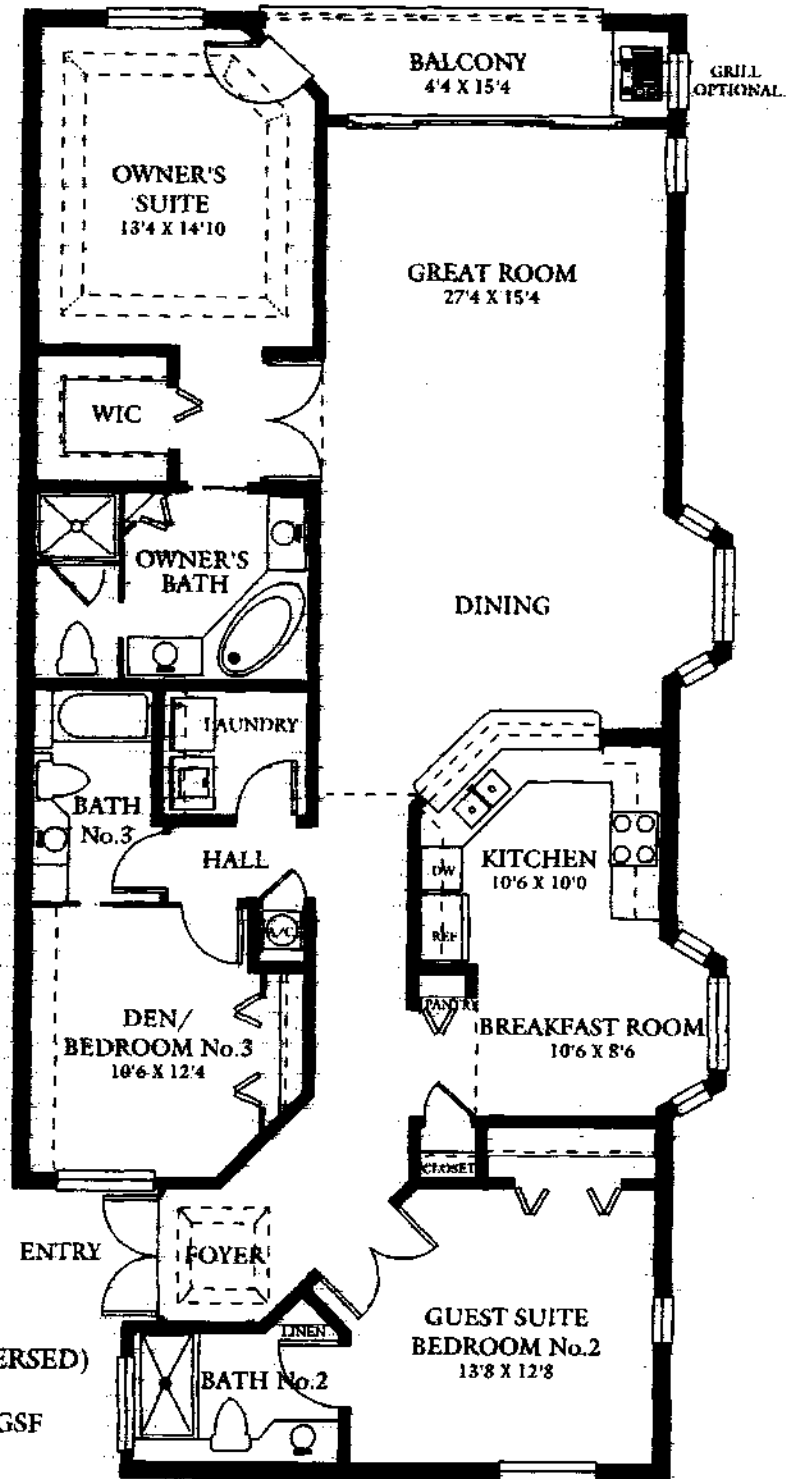


UNIT 106
(UNIT 101 - REVERSED)

GROSS LIVING AREA: 1857 GSF
 SCREENED LANAI: 229
 TOTAL AREA: 2086

All graphic depictions, including dimensions and area, are approximate and subject to change without notice. Oral representations cannot be relied upon as correctly stating representation of the developer. For correct representations, make reference to the documents required by FLORIDA STATUTES SECTION 718.503 to be furnished by the developer to the buyer or lessee.

DORAL - FLORIDA OPTION

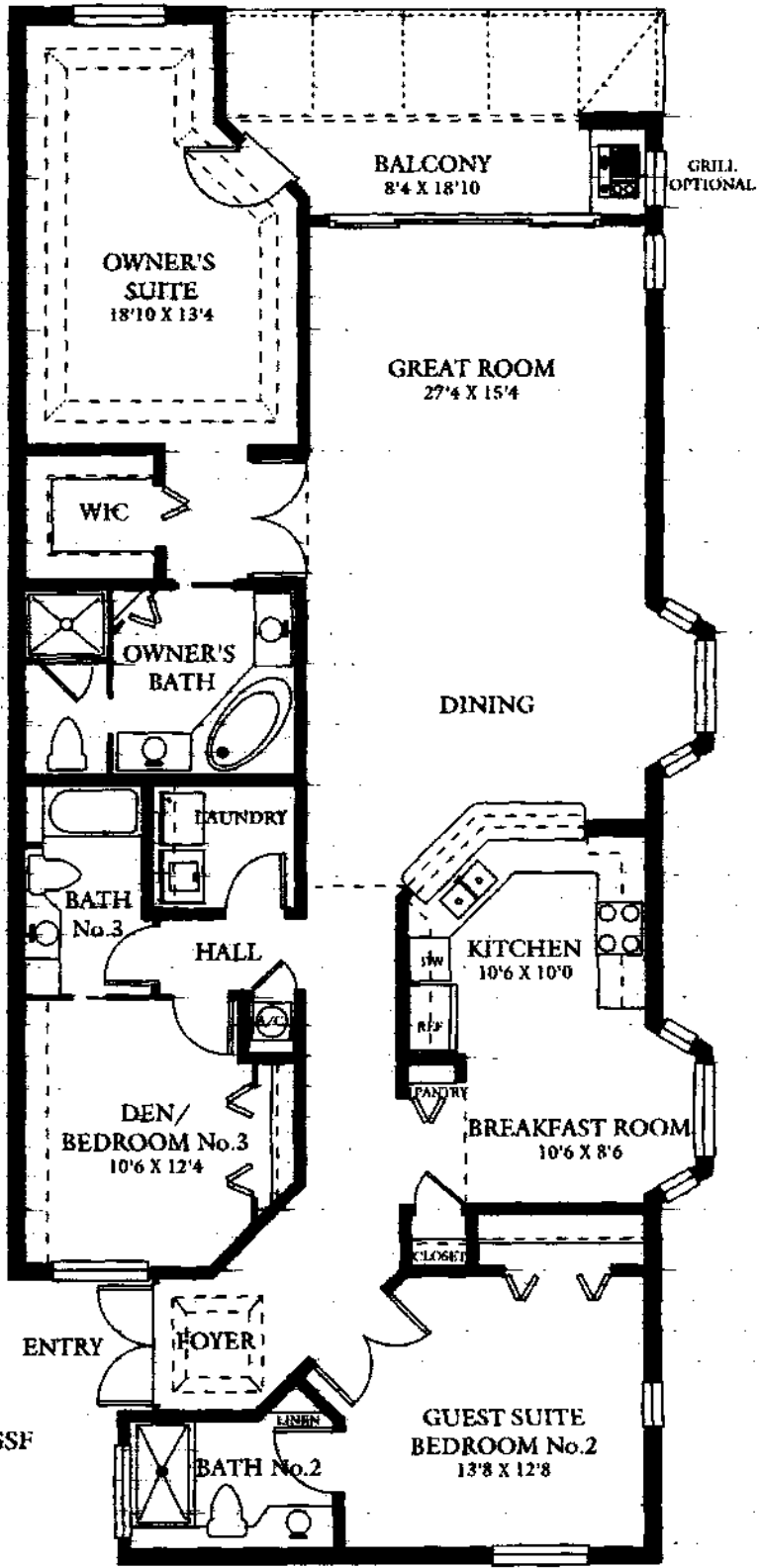


UNITS 206, 306 & 406
(UNITS 201, 301, & 401 - REVERSED)

GROSS LIVING AREA: 1890 GSF
SCREENED BALCONY: 76
TOTAL AREA: 1966

All graphic depictions, including dimensions and area, are approximate and subject to change without notice. Oral representations cannot be relied upon as correctly stating representation of the developer. For correct representations, make reference to the documents required by FLORIDA STATUTES SECTION 718.503 to be furnished by the developer to the buyer or lessee.

DORAL - FLORIDA OPTION FIRST FLOOR

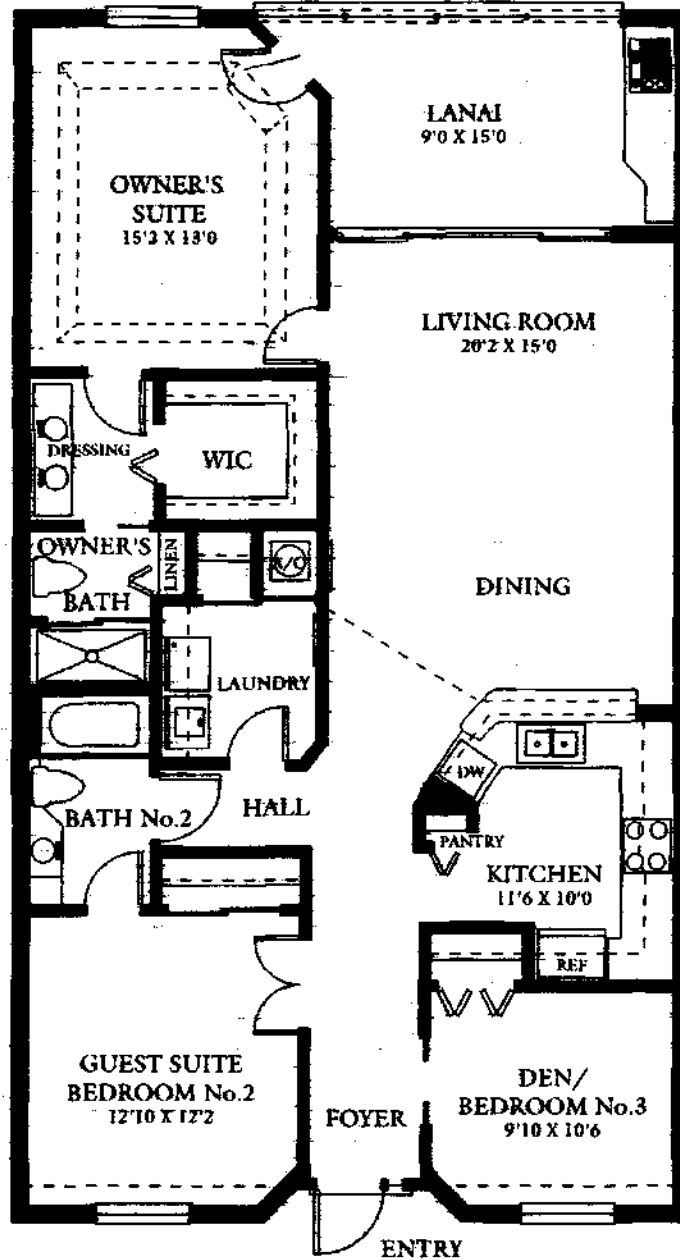


UNIT 106
(UNIT 101 - REVERSED)

GROSS LIVING AREA: 1931 GSF
 SCREENED BALCONY: 155
 TOTAL AREA: 2086

All graphic depictions, including dimensions and area, are approximate and subject to change without notice. Oral representations cannot be relied upon as correct representation of the developer. For correct representations, make reference to the documents required by FLORIDA STATUTES SECTION 718.503 to be furnished by the developer to the buyer or lessee.

OAKMONT

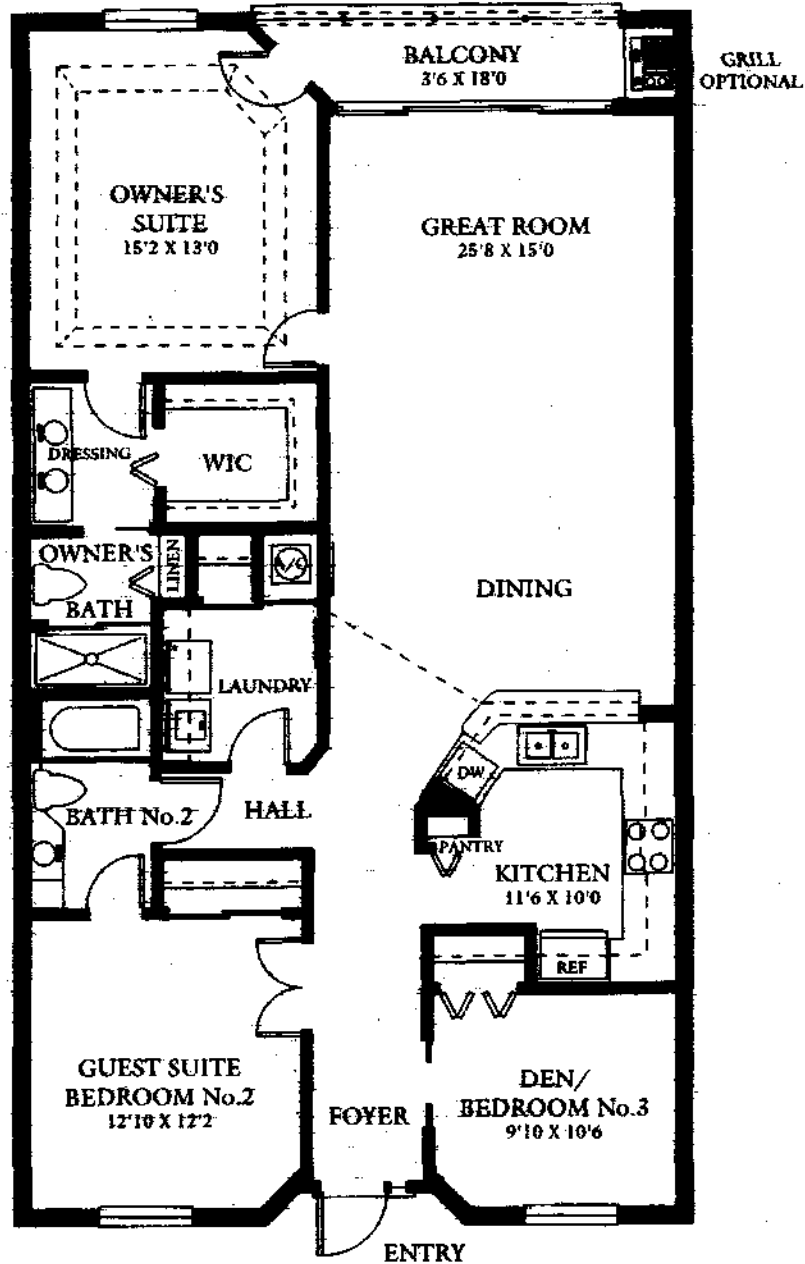


UNITS 105, 205, 305, & 405
(UNITS 102, 202, 302, & 402 - REVERSED)

GROSS LIVING AREA: 1379 GSF
SCREENED LANAI: 143
TOTAL AREA: 1522

All graphic depictions, including dimensions and area, are approximate and subject to change without notice. Oral representations cannot be relied upon as correctly stating representation of the developer. For correct representations, make reference to the documents required by FLORIDA STATUTES SECTION 718.503 to be furnished by the developer to the buyer or lessee.

OAKMONT - FLORIDA OPTION

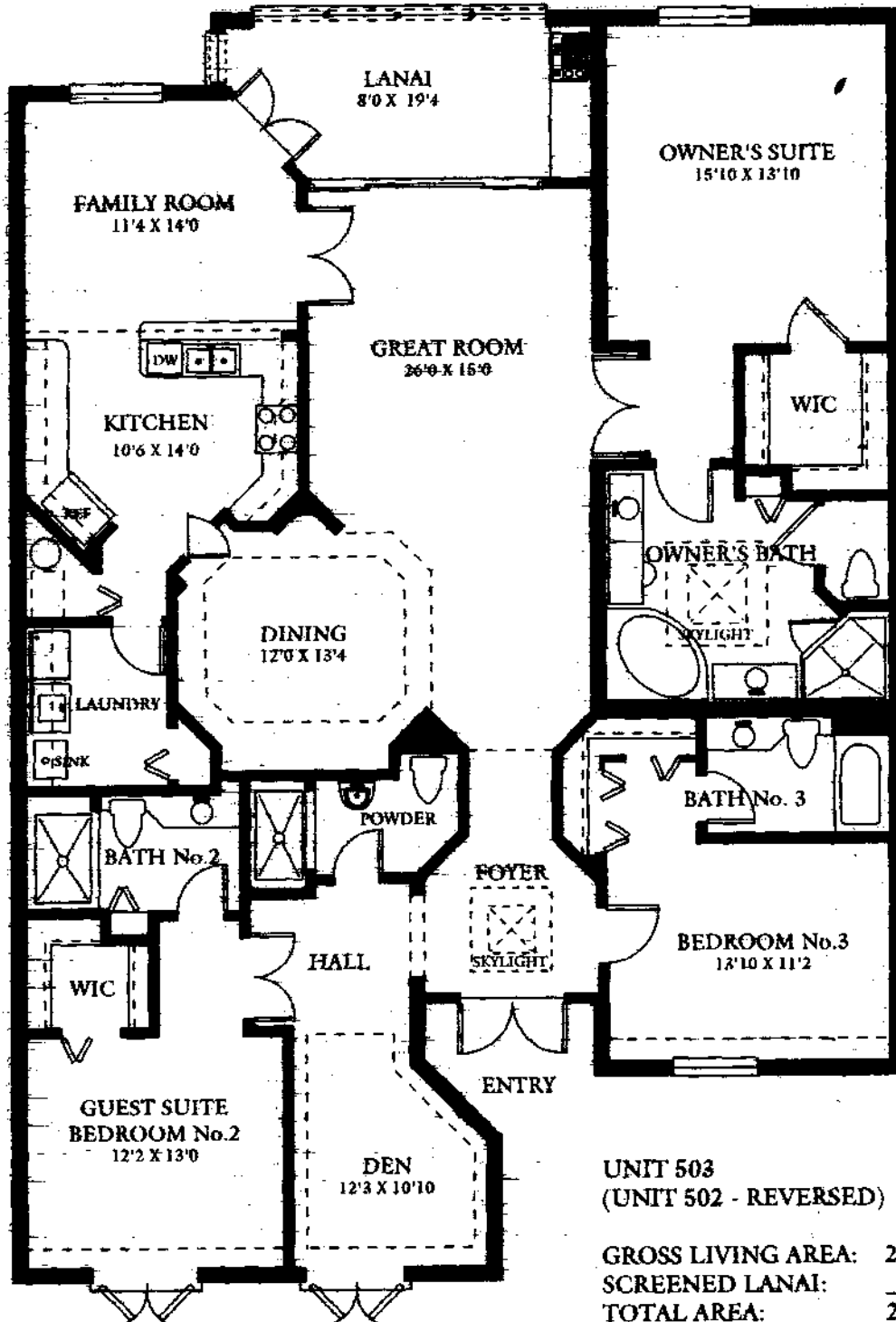


UNITS 105, 205, 305, & 405
 (UNITS 102, 202, 302, & 402 - REVERSED)

GROSS LIVING AREA: 1463 GSF
 SCREENED BALCONY: 59
 TOTAL AREA: 1522

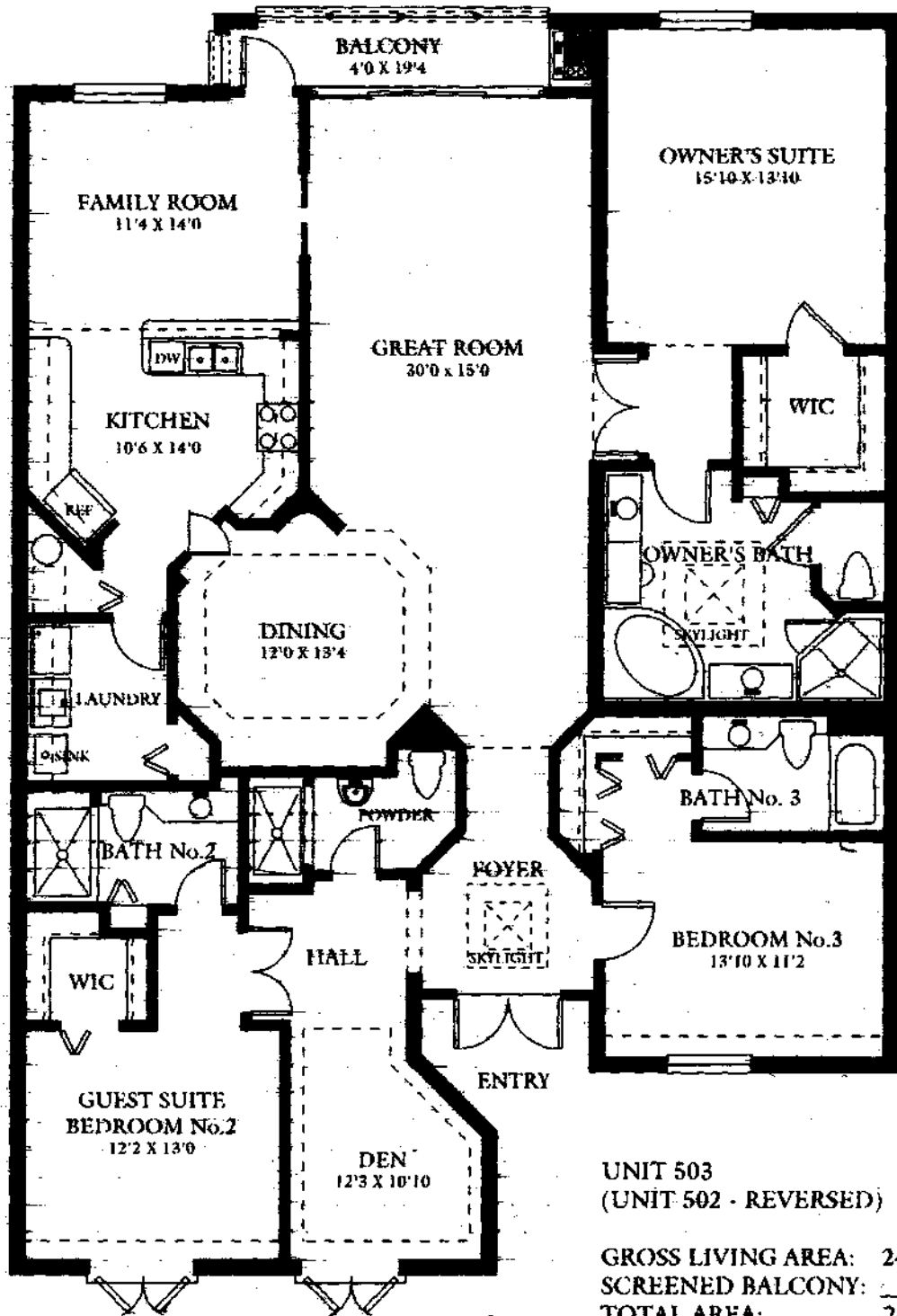
All graphic depictions, including dimensions and area, are approximate and subject to change without notice. Oral representations cannot be relied upon as correctly stating representation of the developer. For correct representations, make reference to the documents required by FLORIDA STATUTES SECTION 718.503 to be furnished by the developer to the buyer or lessee.

PEBBLE BEACH



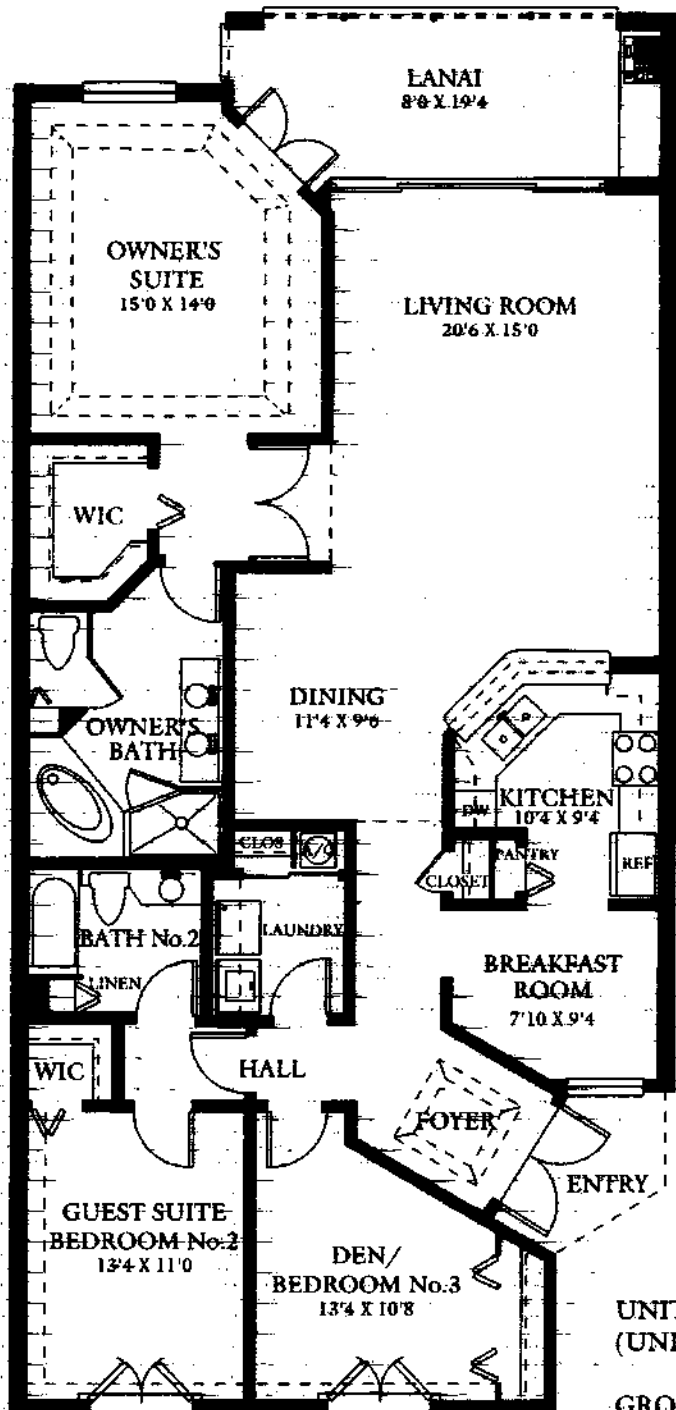
All graphic depictions, including dimensions and area, are approximate and subject to change without notice. Oral representations cannot be relied upon as correctly stating representation of the developer. For correct representations, make reference to the documents required by FLORIDA STATUTES SECTION 718.503 to be furnished by the developer to the buyer or lessee.

PEBBLE BEACH - FLORIDA OPTION



All graphic depictions, including dimensions and area, are approximate and subject to change without notice. Oral representations cannot be relied upon as correctly stating representation of the developer. For correct representations, make reference to the documents required by FLORIDA STATUTES SECTION 718.503 to be furnished by the developer to the buyer or lessee.

SPYGLASS

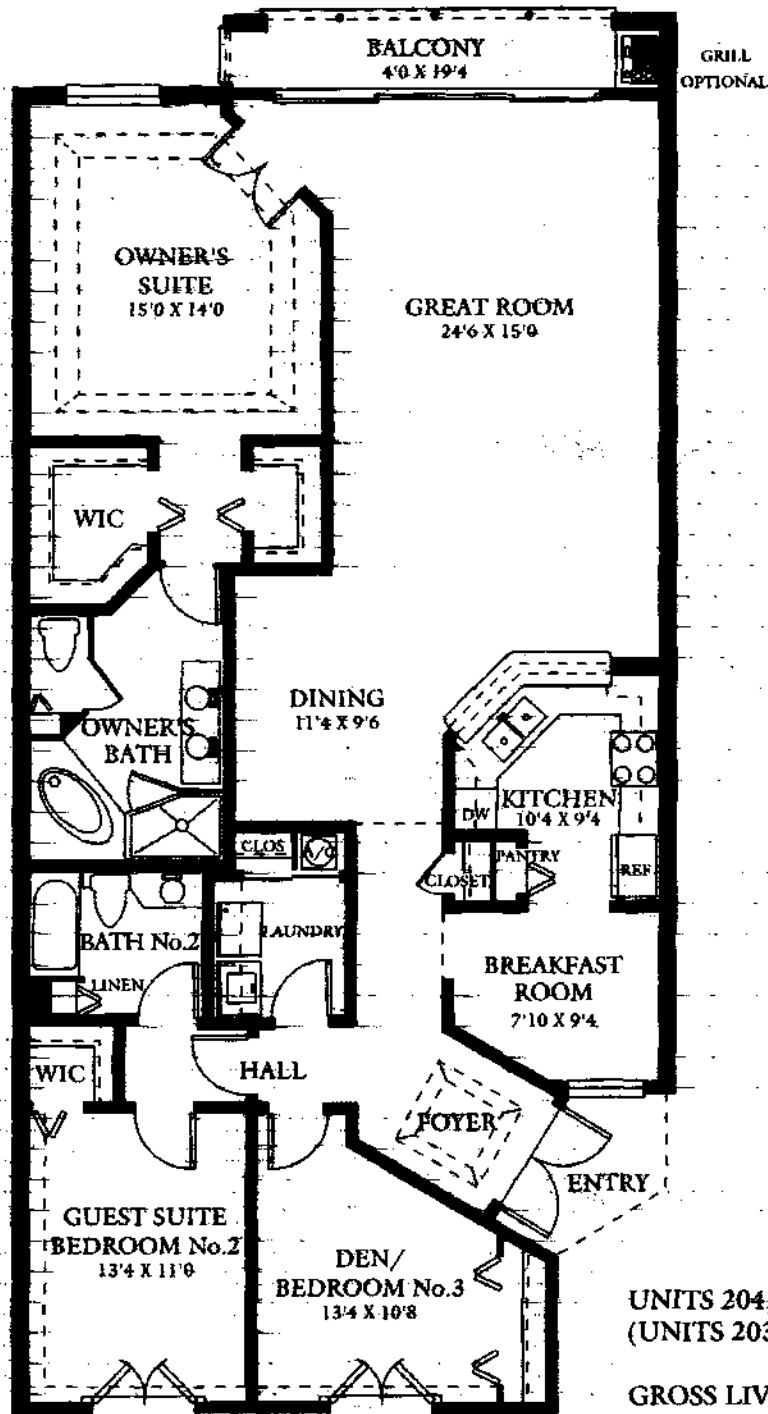


UNITS 204, 304, & 404
(UNITS 203, 303, & 403 - REVERSED)

GROSS LIVING AREA: 1641 GSF
SCREENED LANAI: 156
TOTAL AREA: 1797

All graphic depictions, including dimensions and area, are approximate and subject to change without notice. Oral representations cannot be relied upon as correctly stating representation of the developer. For correct representations, make reference to the documents required by FLORIDA STATUTES SECTION 718.503 to be furnished by the developer to the buyer or lessee.

SPYGLASS - FLORIDA OPTION

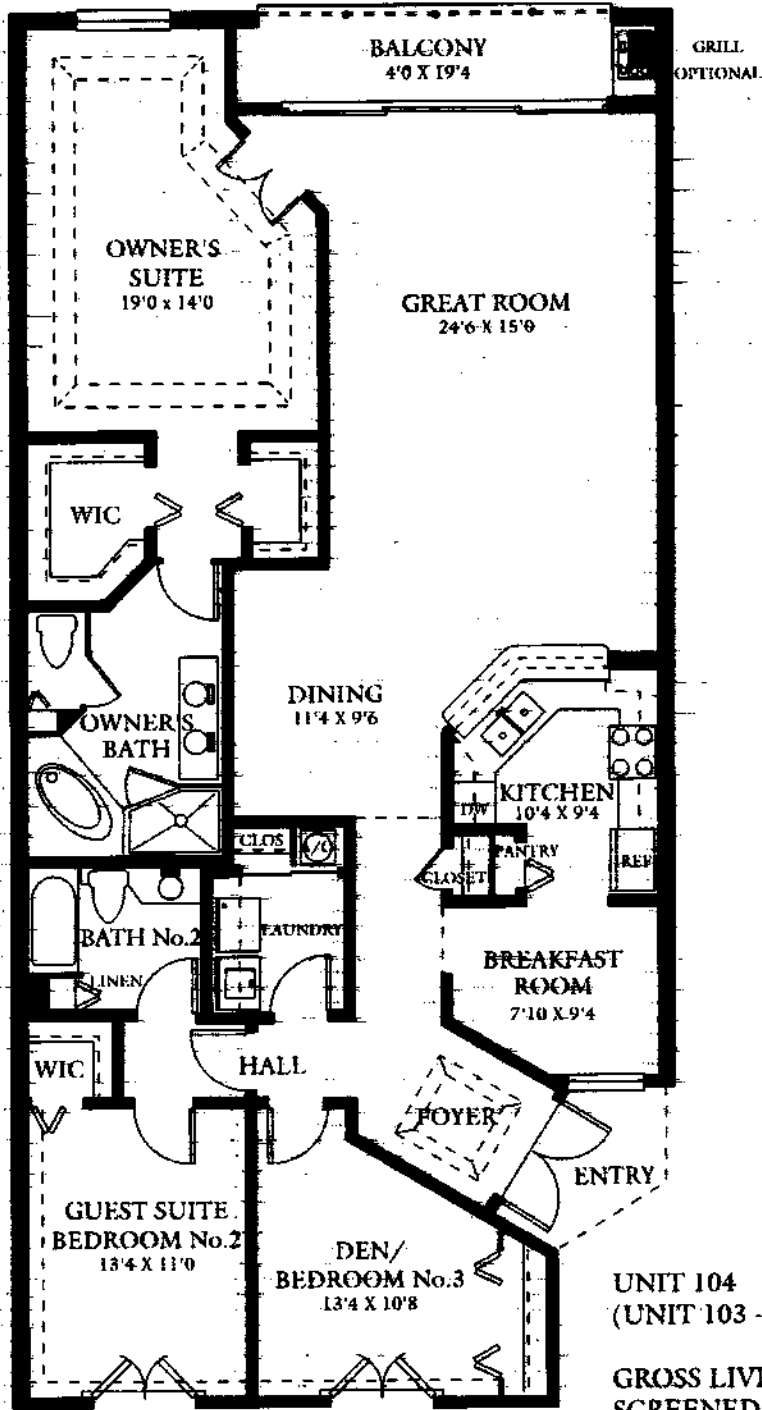


UNITS 204, 304, & 404
(UNITS 203, 303, & 403 - REVERSED)

GROSS LIVING AREA: 1716 GSF
SCREENED BALCONY: 81
TOTAL AREA: 1797

All graphic depictions, including dimensions and area, are approximate and subject to change without notice. Oral representations cannot be relied upon as correctly stating representation of the developer. For correct representations, make reference to the documents required by FLORIDA STATUTES SECTION 718.503 to be furnished by the developer to the buyer or lessee.

SPYGLASS - FLORIDA OPTION FIRST FLOOR

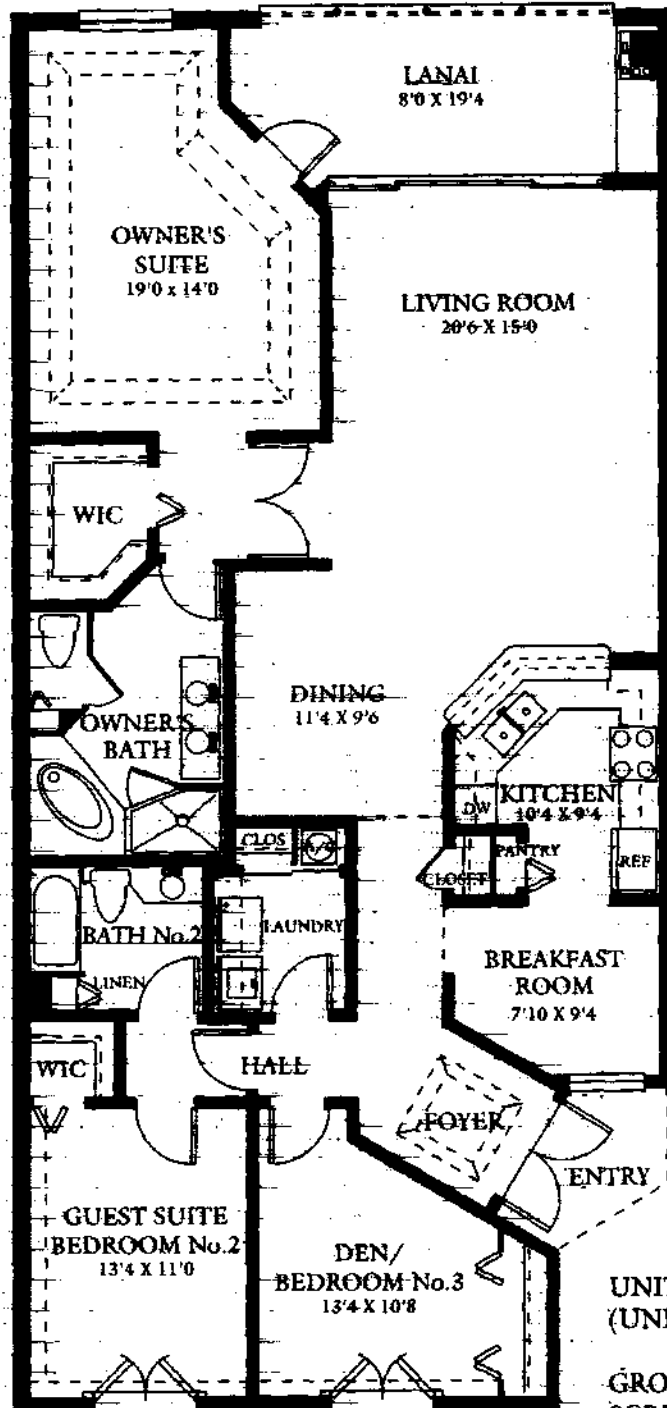


UNIT 104
(UNIT 103 - REVERSED)

GROSS LIVING AREA: 1758 GSF
 SCREENED BALCONY: 78
 TOTAL AREA: 1836

All graphic depictions, including dimensions and area, are approximate and subject to change without notice. Oral representations cannot be relied upon as correctly stating representation of the developer. For correct representations, make reference to the documents required by FLORIDA STATUTES SECTION 718.503 to be furnished by the developer to the buyer or lessee.

SPYGLASS - FIRST FLOOR



UNIT 104
(UNIT 103 - REVERSED)

GROSS LIVING AREA: 1688 GSF
 SCREENED LANAI: 148
 TOTAL AREA: 1836

All graphic depictions, including dimensions and area, are approximate and subject to change without notice. Oral representations cannot be relied upon as correctly stating representation of the developer. For correct representations, make reference to the documents required by FLORIDA STATUTES SECTION 718.503 to be furnished by the developer to the buyer or lessee.